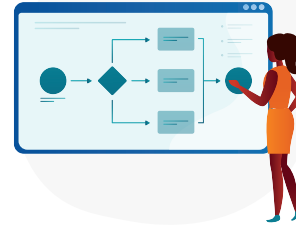


# 5 iPaaS Terms You Should Know



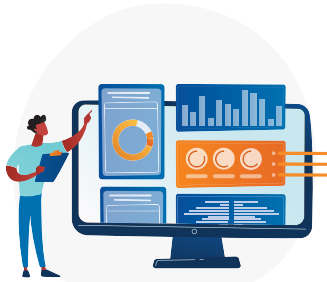
## Integration Platform as a Service

AKA, iPaaS, this is a cloud-based platform that can build integrations between applications, processes, and data, either on-premise or in the cloud.



## No-Code/ Low-Code

A no-code/low-code platform uses a visual flow builder so that anyone can create workflows, regardless of their technical background!



## ETL

Defined as Extract, Transform, Load, this process consolidates data from multiple sources into one source.



## API

Application programming interfaces work to communicate and pass data between external systems.



## Connector

In an iPaaS system, connectors are app connections offered out-of-the-box—think Salesforce, Slack, Office365, etc.

## Workato's Unique iPaaS Solution

As a leader in iPaaS, Workato combines their integration-led platform with ETL/ELT tools and enables you to build end-to-end workflow automations. Maintain integration and automation flows through any source: cloud, on-premise, files, ERPs, APIs, and data streams. Workato's low-code platform offers thousands of connectors for easy workflow builds in their user-friendly interface.

Contact us to find out how you can start benefiting from Workato's comprehensive iPaaS solution